



**Gildea Tool & Engineering
&
Merkler Machine Works**

G R O U P

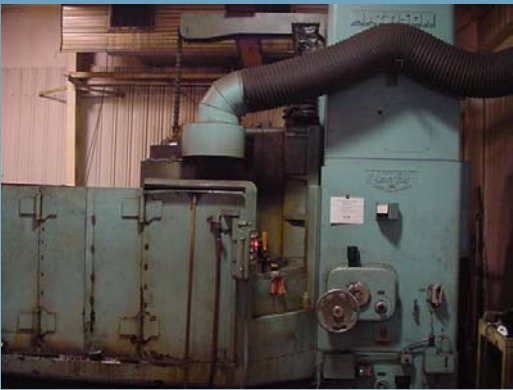
Grinding

Service OVERVIEW

Gildea Tool & Engineering and Merkler Machine Works provide it's customers with a variety of grinding services as detailed in our Capabilities Overview and on our web site.

Our machines include the largest grinder available in Northern Indiana (108" x 40" capabilities).

Whether you require rapid turnaround, large, or small grinding, internal or external grinding, GT has the ability to meet your need for quality, value and delivery.



Gildea Tool & Engineering and Merkler Machine Works (Divisions of GT Automation Group) are proud of their ability to bring customers special machines and unique capabilities in a variety of service applications.

Application Examples

Grinders	Rotary Surface Mattison 108" x 40" Blanchard 42" Surface Thompson 36" x 72" Okamoto Hydraulic 16" x 32" Chevalier 6" x 12" Mitsui 6" x 12" Moore Jig 10" x 19" Heald Universal Internal 19" capacity Cylindrical Landis 20" x 78" Norton 6" x 36"
Delivery	1 to 2 day service, pickup and delivery available.
Applications	Plates, Frames, Tables, Weldments, Double end grinder feed chain, Bolsters, Production Parts, and Castings.

Call us for a quote

4422 Airport Expressway • Fort Wayne • Indiana • 46809 • p. 260.478.7800 • f. 260.478.7808
 contact us at info@gtautomation.com or visit us online at www.gtautomation.com
 ISO 9001: 2000 Certified